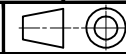


To contact us - Tel +44 (0)1279-729051 email: info@powerproducts.co.uk

**IF IN DOUBT
ASK**

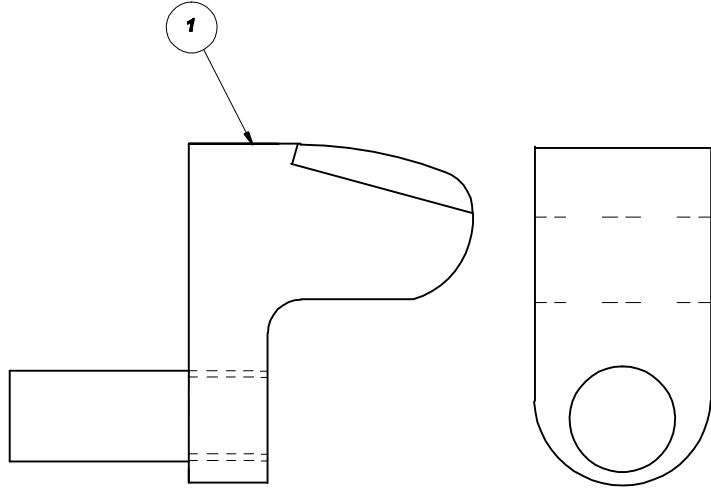
All information contained in this document is confidential and the copyright reserved

Used on dwg MANUAL

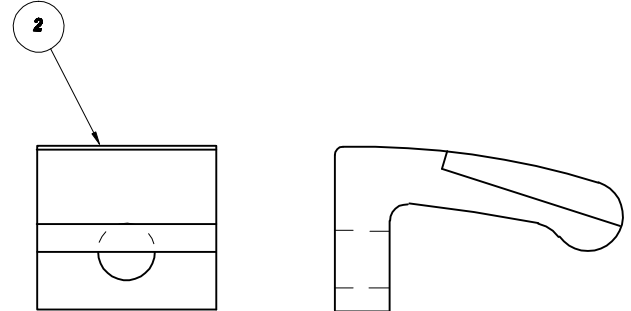


P100900

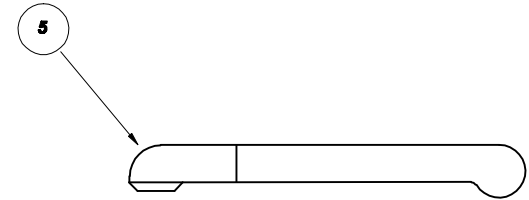
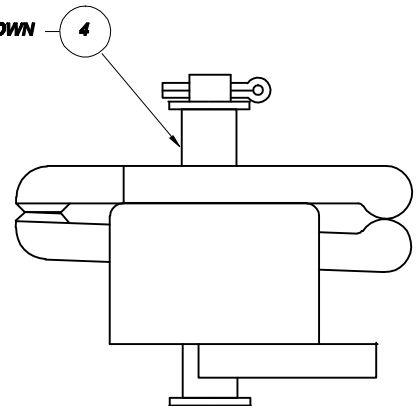
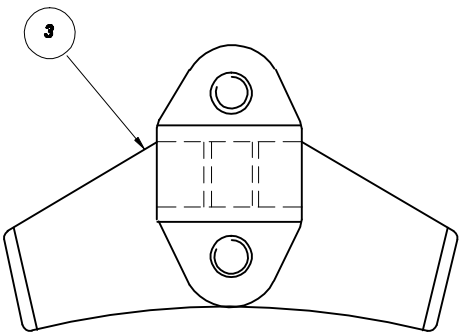
Quantity				No	Description	Detail No	OEM Part No
D	C	B	A				
		12		1	FIXED DIVERTER CONTACT	P100001/A	
		12	24	2	DIVERTER CONTACT	P100002/A	
				3	FIXED SELECTOR CONTACT	P100049/1	
				4	MOVING SEL CONTACT ASSY	P100047/A	
				5	MOVING SEL CONTACT FINGER	P100047/1	



GROUP A = M21
GROUP B = 2M21 WITH FIXED CONTACT 100-001-A AND MOVING CONTACT 100-002-A



SPRINGS AND SCREWS NOT SHOWN



**SUB STATION
SUPPLY
SOLUTIONS**

**PATTERN DIV & SEL SWITCH
CONTACTS FOR AEI TYPE
M21 & 2M21 TAPCHANGERS**

No	Revision notes	Date/Sig	No	Revision notes	Date/Sig	No	Revision notes	Date/Sig	Scale NTS	Drawn ACS	Checked AJT	Approved AJT	Date 28/03/10

REV No	P100900	REV
Sheet No		0