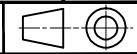


To contact us - Tel +44 (0)1279-729051 email: info@powerproducts.co.uk

**IF IN DOUBT
ASK**

All information contained in this document is confidential and the copyright reserved

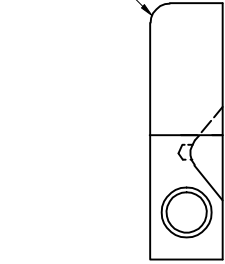
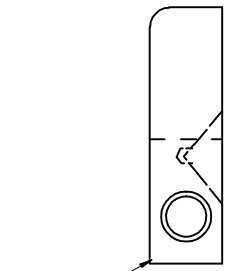
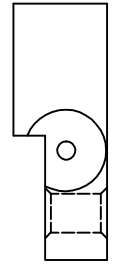
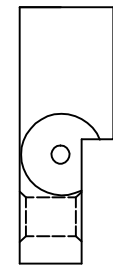
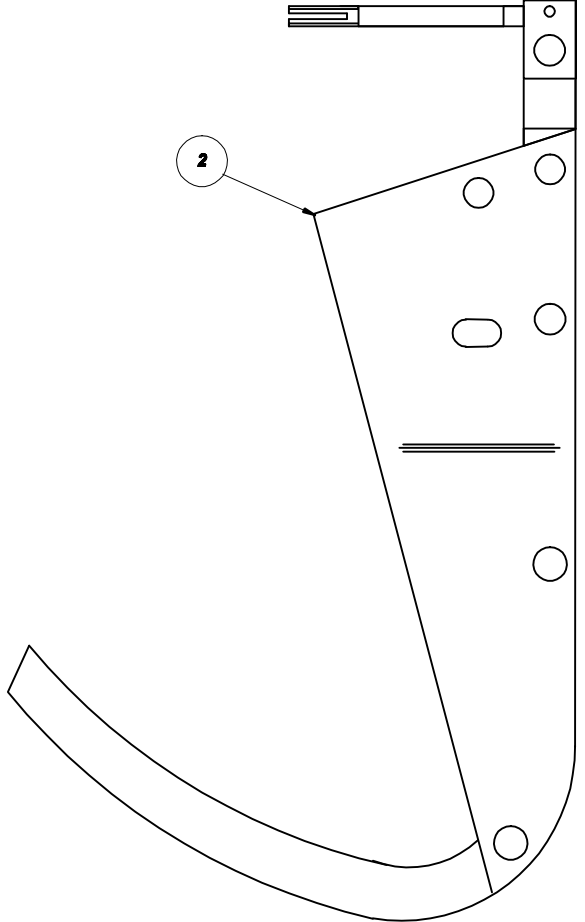
Used on dwg MANUAL



P100910

Quantity				No	Description	Detail No	OEM Part No
D	C	B	A				
			3	1	FIXED CONTACT FINGER SET	P100025/A	
			3	2	MOVING CONTACT ASSEMBLY	P100026/A	

SEE DRAWING P100905 FOR OTHER JB SERIES MOVING CONTACTS
GROUP A - ONE SET OF FIXED AND MOVING CONTACTS



1 FINGERS SUPPLIED AS A PAIR

6
5
4
3
2
1

**SUB STATION
SUPPLY
SOLUTIONS**

**PATTERN FIXED AND MOVING
CONTACTS FOR AEI TYPE
JB424 WM3 SWITCHGEAR**

No	Revision notes	Date/Sig	No	Revision notes	Date/Sig	No	Revision notes	Date/Sig	Scale NTS	Drawn ACS	Checked A/JT	Approved A/JT	Date 28/03/10	Sheet No	P100910	REV 0
----	----------------	----------	----	----------------	----------	----	----------------	----------	-----------	-----------	--------------	---------------	---------------	----------	----------------	-----------------