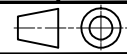


To contact us - Tel +44 (0)1279-729051 email: info@powerproducts.co.uk

**IF IN DOUBT  
ASK**

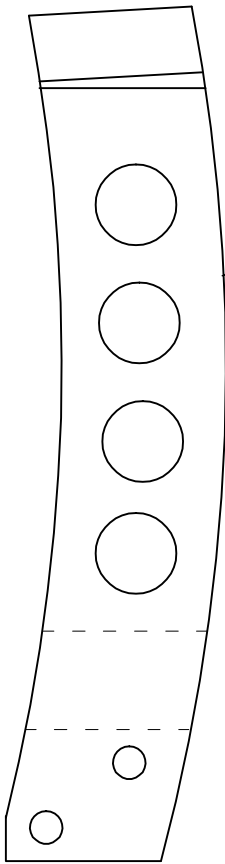
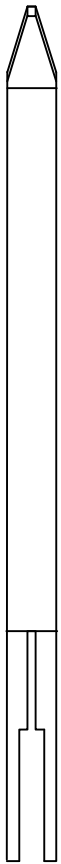
All information contained in this document is confidential and the copyright reserved

Used on dwg MANUAL

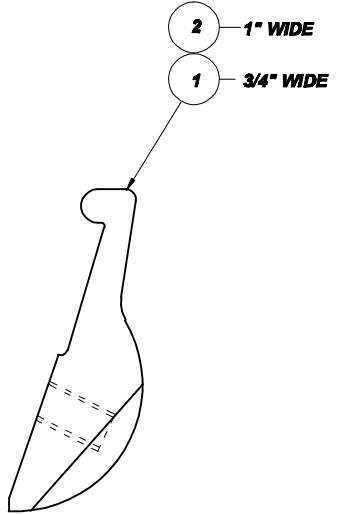
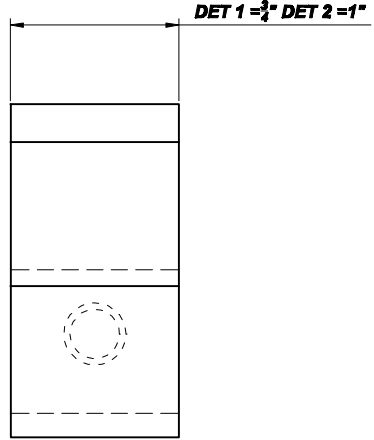
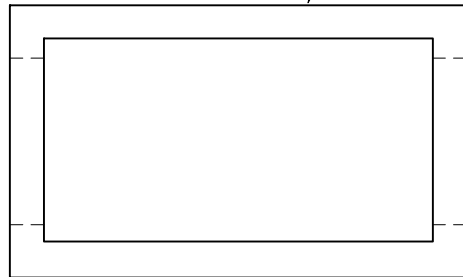


**P340922**

Quantity				No	Description	Detail No		OEM Part No
D	C	B	A					
				1	3/4" FIXED CONTACT (WITTON)	P340038/A	35-37-886	DD 14827-1
				2	1" FIXED CONTACT (WITTON)	P340038/A	35-37-887	DD 14827-2
				3	MOVING CONTACT (4 HOLE)	P340032/A	35-37-885	DD 37948
				4	MOVING CONTACT (5 HOLE)	P340032/A	Not Shown	DC 80807
				5	MOVING CONTACT (6 HOLE)	P340034/A	Not Shown	
				6	GASKET	P340058/1	Not Shown	



- 3 - (4 HOLE AS SHOWN)
- 4 - (5 HOLE NOT SHOWN)
- 5 - (6 HOLE NOT SHOWN)



MK 1 1981 to 1988 (5 HOLE)  
 MK 2 1988 to 1984 (4 HOLE)  
 MK 3 1984 onwards (6 HOLE)

**SUB STATION  
SUPPLY  
SOLUTIONS**

**PATTERN FIXED AND  
MOVING CONTACTS FOR GEC  
TYPE J TAPCHANGER**

No	Revision notes	Date/Sig	No	Revision notes	Date/Sig	No	Revision notes	Date/Sig	Scale NTS	Drawn ACS	Checked AJT	Approved AJT	Date 01/03/10	Sheet No	REV
															0

**P340922**