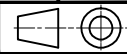


To contact us - Tel +44 (0)1279-729051 email: info@powerproducts.co.uk

**IF IN DOUBT
ASK**

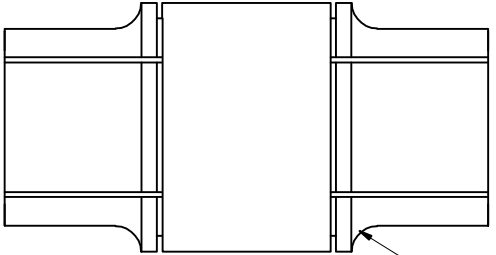
All information contained in this document is confidential and the copyright reserved

Used on dwg MANUAL

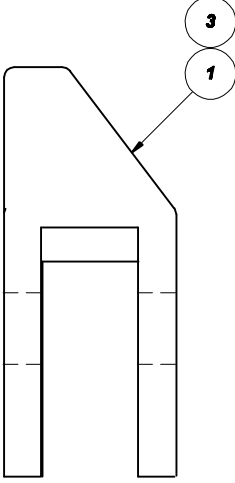


P520902

Quantity				No	Description	Detail No	OEM Part No
D	C	B	A				
			1	1	Fixed Contact Fingers 1xLH 1xRH	P520001/A	SILVER PLATED
		1	1	2	Moving Contact	P520002/A	NATURAL FINISH
		1		3	Fixed Contact Fingers 1xLH 1xRH	P520001/B	NATURAL FINISH
				4	ISOLATING CLUSTER	P520008/A	

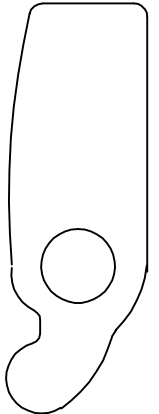


4

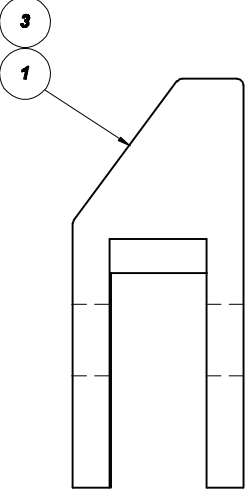


3

1

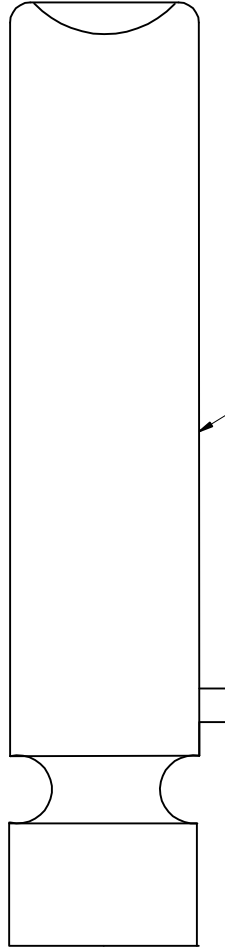


COMMON PROFILE



3

1



2

**SUB STATION
SUPPLY
SOLUTIONS**

**PATTER FIXED AND MOVING
CONTACTS FOR METROPOLITAN
VICKERS TYPE V1R/H1R SWGR**

No	Revision notes	Date/Sig	No	Revision notes	Date/Sig	No	Revision notes	Date/Sig	Scale NTS	Drawn ACS	Checked AJT	Approved AJT	Date 02/03/10	Sheet No	REV
----	----------------	----------	----	----------------	----------	----	----------------	----------	-----------	-----------	-------------	--------------	---------------	----------	-----

P520902

**REV
0**